

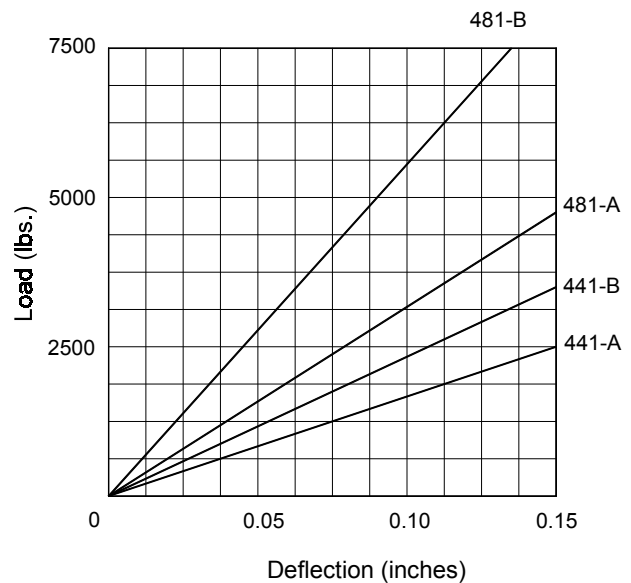
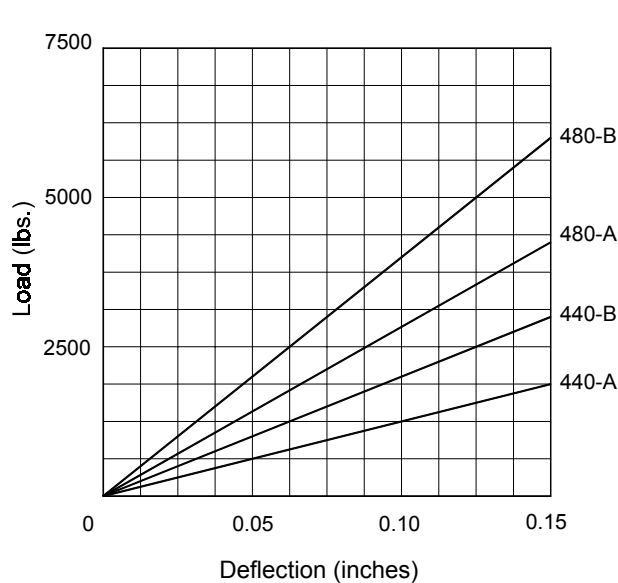


SERIES 400

MOLDED

NEOPRENE PADS

CATALOG NO. 90A-600-D



Material:

- Oil, ozone, and weather resistant neoprene rubber is standard.
- Silicone rubber for high, and low temperature environment.
- Conductive rubber for static control.

Economy:

- Higher load capacity, up to 200 psi can be applied.
- No maintenance is required after installation.

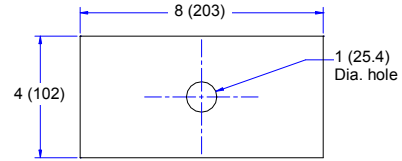
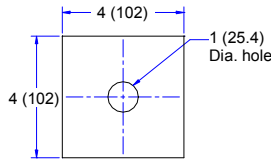
Versatility:

Can be used as single or multiple unit for unlimited load capacities.

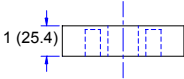
ACE MOUNTINGS CO., INC.

11 Cross Avenue
 South Amboy, NJ 08879
 Tel: (732)721-6200 Fax: (732)721-5005
 Email: acemount@att.net
 Website: www.acemount.com

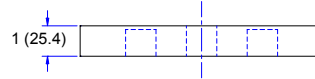
Dimensions • Load Rating



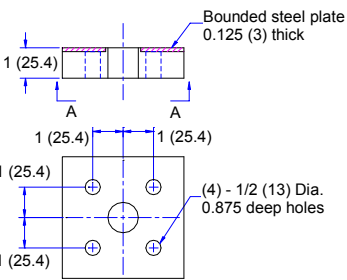
Type 440



Type 480

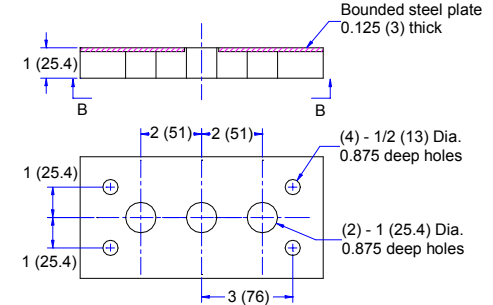


Type 441



View A-A

Type 481

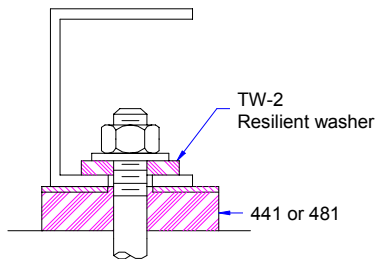


View B-B

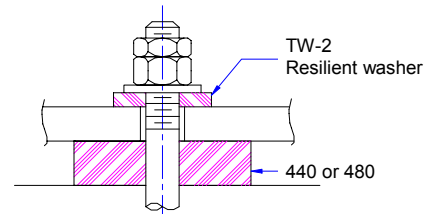
Note: All dimensions are in inches (mm).

Type of pad	440-A	440-B	480-A	480-B	441-A	441-B	481-A	481-B
Max. load in lbs.	1200	2500	3500	5000	1800	3000	4000	7000

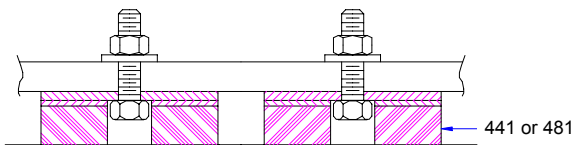
APPLICATIONS



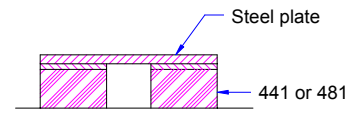
(1) Equipment with narrow bearing surface.



(3) Equipment with large bearing surface.



(2) Studs added for easy installation.



(4) Multiple unit for extra heavy load.

ACE MOUNTINGS CO., INC.

11 Cross Avenue
 South Amboy, NJ 08879
 Tel: (732)721-6200 Fax: (732)721-5005
 Email: acemount@att.net
 Website: www.acemount.com