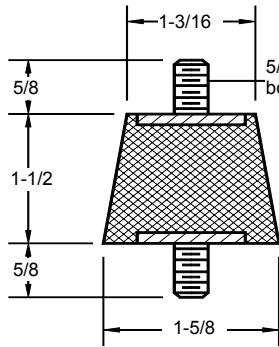
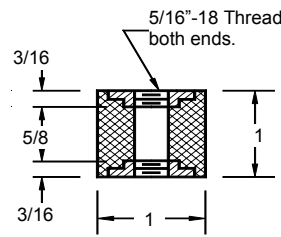


**CYLINDRICAL MOUNTS**



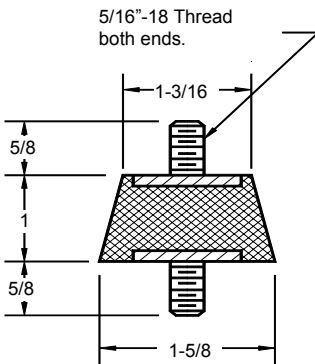
**E1**

Compression  
60 lbs.  
3/16 in.



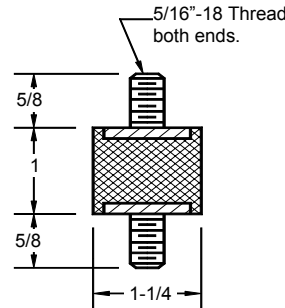
**E4**

Compression      Shear  
25 lbs.                  10 lbs.  
1/16 in.                5/32 in.



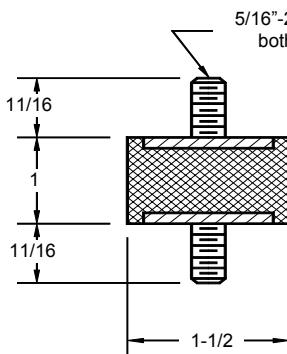
**E2**

Compression  
100 lbs.  
5/32 in.



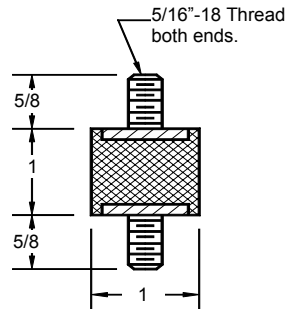
**E1210**

Compression      Shear  
65 lbs.                  15 lbs.  
1/8 in.                  5/32 in.



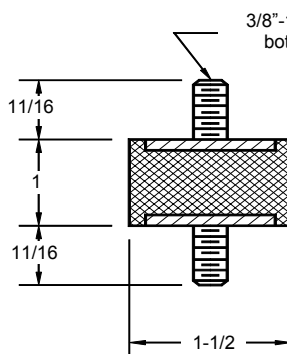
**E3**

Compression      Shear  
135 lbs.                40 lbs.  
5/32 in.                1/4 in.



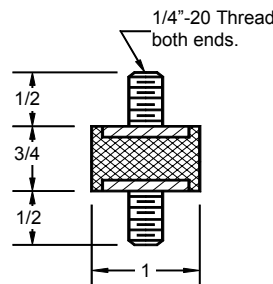
**E5**

Compression      Shear  
40 lbs.                  10 lbs.  
1/8 in.                  5/32 in.



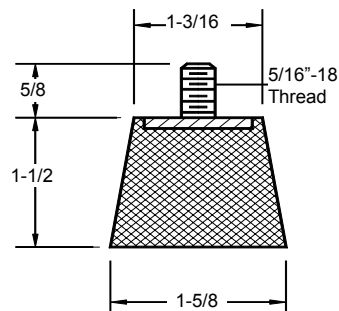
**E3-1**

Compression      Shear  
135 lbs.                40 lbs.  
5/32 in.                1/4 in.



**E6**

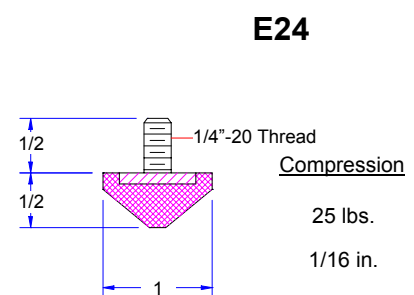
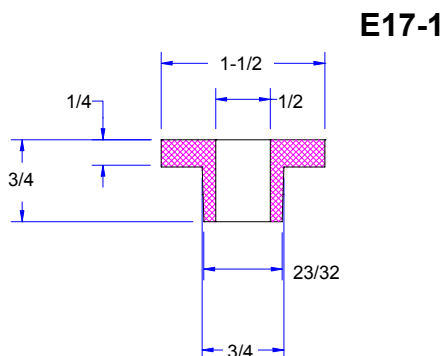
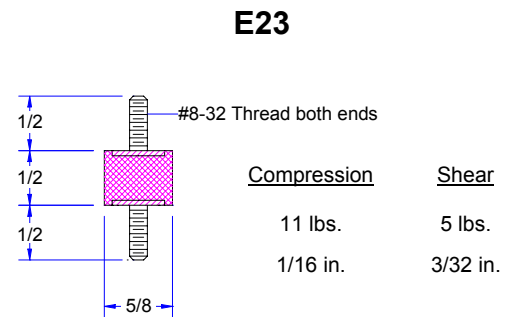
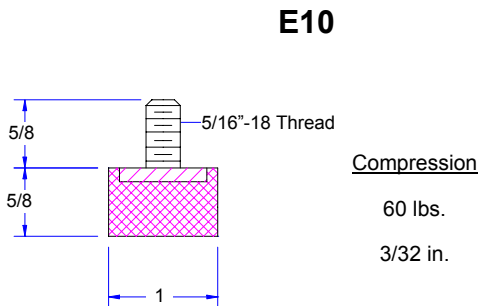
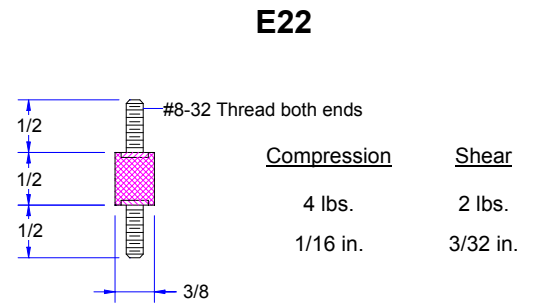
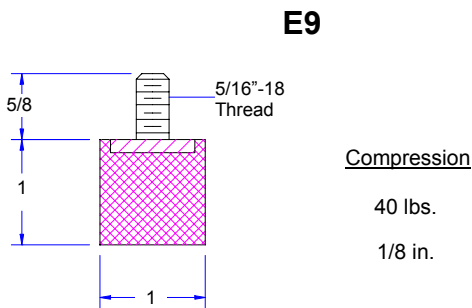
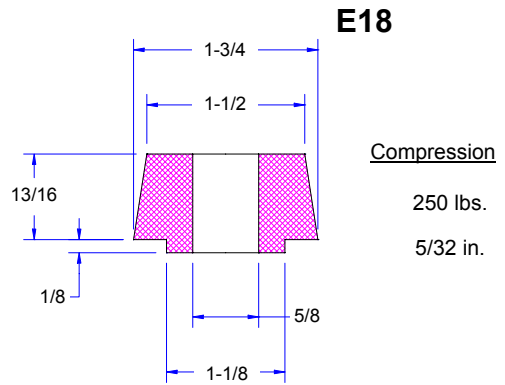
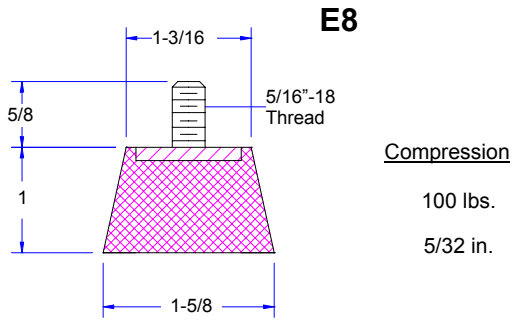
Compression      Shear  
50 lbs.                  10 lbs.  
1/8 in.                  1/8 in.



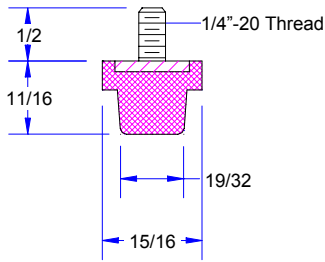
**E7**

Compression  
60 lbs.  
3/16 in.

**CYLINDRICAL MOUNTS**



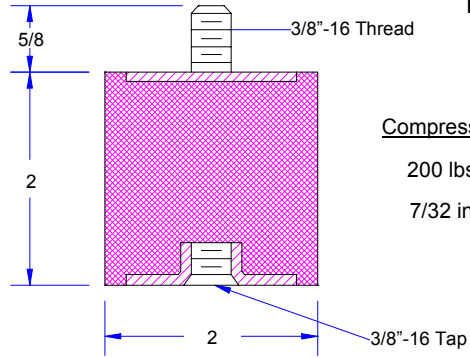
**CYLINDRICAL MOUNTS**



**E25**

Compression

25 lbs.  
1/16 in.



**E31**

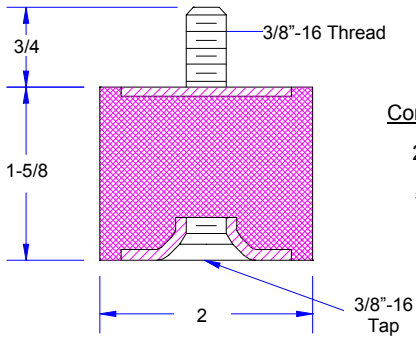
Compression

200 lbs.  
7/32 in.

Shear

150 lbs.  
1/2 in.

**E30**



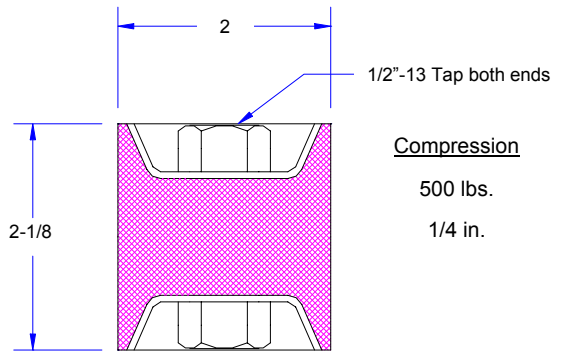
Compression

250 lbs.  
5/32 in.

Shear

125 lbs.  
1/2 in.

**E40**



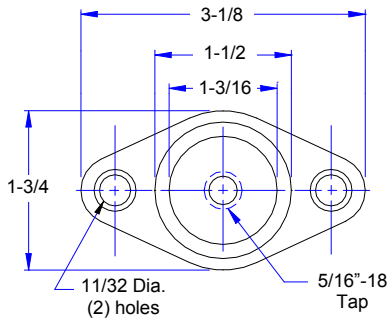
Compression

500 lbs.  
1/4 in.

Shear

200 lbs.  
1/2 in.

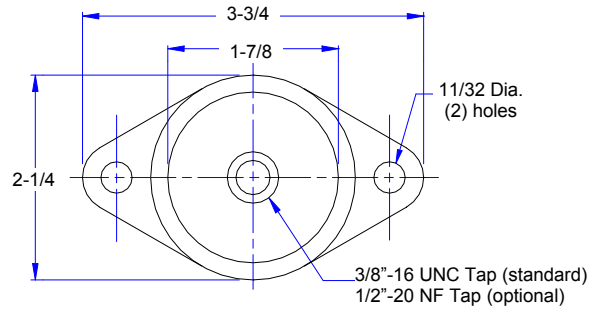
**E11**



Compression

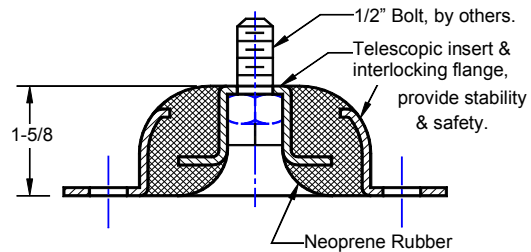
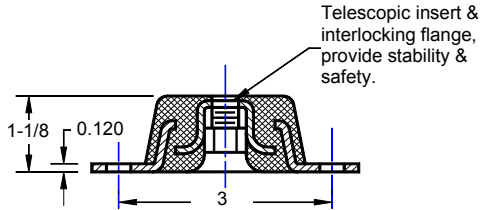
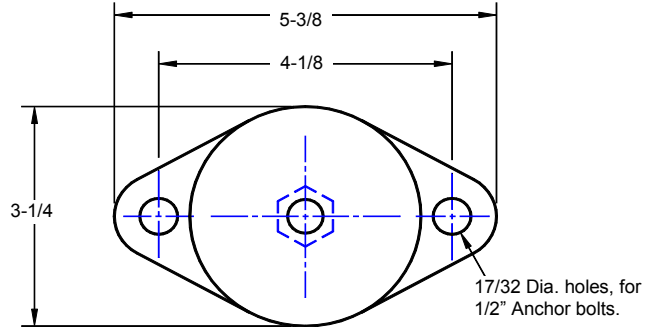
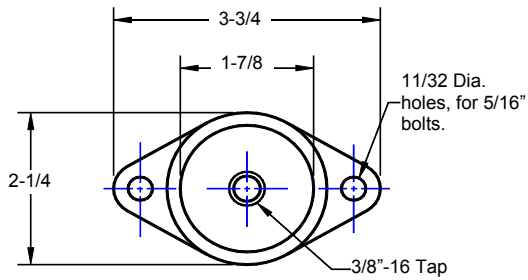
<u>E11-A</u>	<u>E11-B</u>
37.5 lbs.	115 lbs.
0.10 in.	0.10 in.

**E12**



Compression

<u>E12-A</u>	<u>E12-B</u>	<u>E12-C</u>
100 lbs.	150 lbs.	175 lbs.
1/8 in.	1/8 in.	1/8 in.

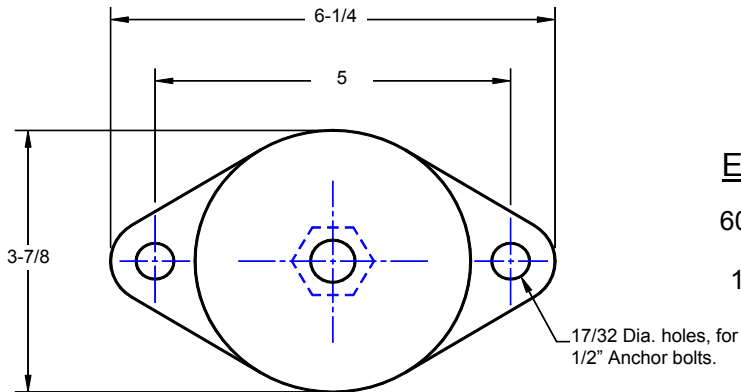


Compression

<u>E13-A</u>	<u>E13-B</u>
150 lbs.	200 lbs.
0.085 in.	0.06 in.

Compression

<u>E14-A</u>	<u>E14-B</u>	<u>E14-C</u>
375 lbs.	700 lbs.	1000 lbs.
1/8 in.	1/8 in.	1/8 in.



Compression

<u>E15-A</u>	<u>E15-B</u>	<u>E15-C</u>
600 lbs.	1100 lbs.	2000 lbs.
1/8 in.	1/8 in.	1/8 in.

